



Decisis Deployment Quick Start

This document provides an overview of the deployment preparations and traffic requirements for Cayuga Networks Decisis™ and Decisis XL network respectively. The Decisis server ships pre-configured, and Cayuga Networks engineers perform the final installation and configuration onsite.

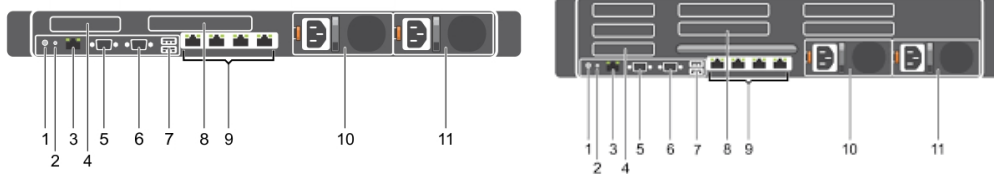
Initial Configuration Requirements

- Access to a network edge Tap or SPAN port
- 1-U or 2-U powered slot in a datacenter rack
- 1 IP addresses assigned to the server – EM1 and EM2
- DNS entry to map the server name to one of its IP addresses (preferred)
- Remote access to the server

The management interface is the first port (em1), and the tap is the second port (em2). Both are 1G copper on the base server. The EM2 port is fiber on the Decisis XL.

Decisis

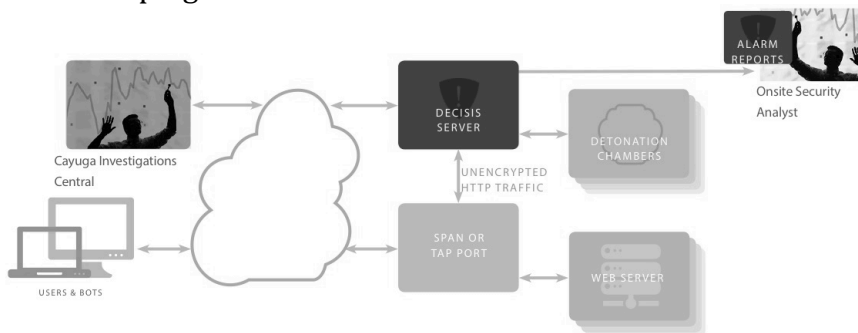
Decisis XL



The management network cable goes into the left-most socket on item 9, and the SPAN/TAP cable goes onto the 2nd left-most socket on item 9. Power cables go into both sockets shown as items 10 and 11. For initial installation, monitor and keyboard and mouse plug into items 6 and 7, respectively.

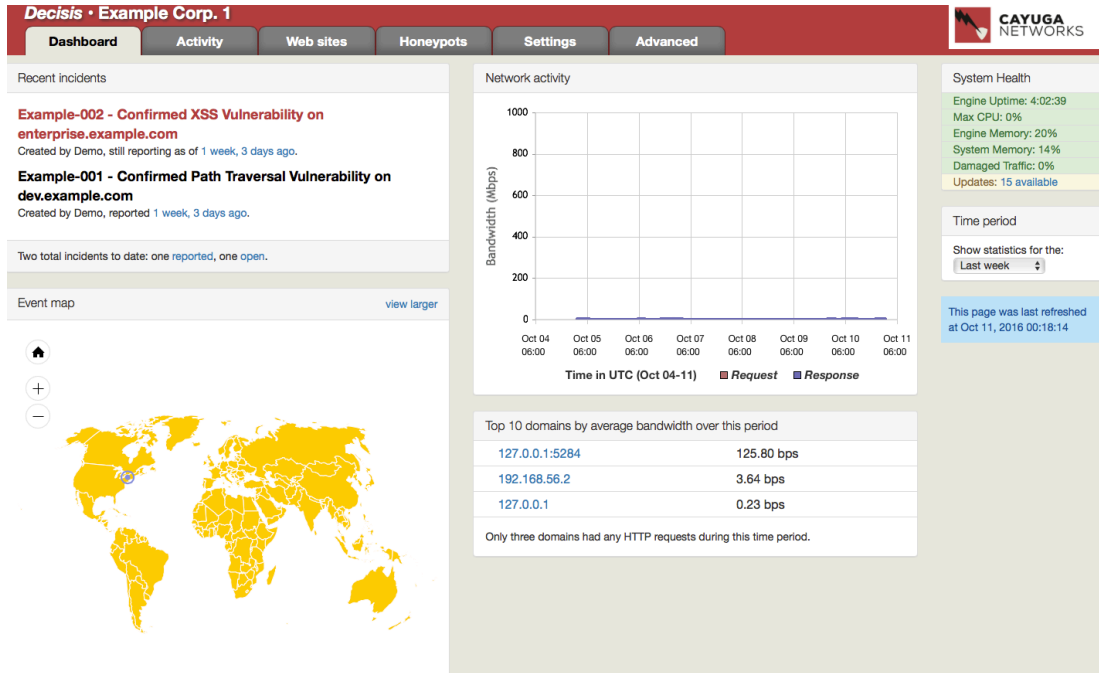
Deployment Architecture

The server is typically deployed off a network TAP or SPAN port, but other options include reverse proxy and server plugins.





Access the server by pointing a browser at it, and then login using your credentials. If you do not know your login credentials, contact your Cayuga Networks representative.



Required Connectivity

The table below outlines the connectivity requirements for the server. You may need to change some firewall rules and add a DNS entry to allow access to these services by Decisis.

Source	Destination	Description
Port 443 on Decisis Server	A single Cayuga Networks IP address	Reports to system health and status to Cayuga Central Via https
A single Cayuga Networks IP address	Port 443 on Decisis Server	Inbound access its web interface from Cayuga Networks access to Decisis UI for managed service
A single Cayuga Networks IP address	Port 22 on Decisis Server	Inbound access its web interface from Cayuga Networks for remote management and updates
DNS Server	DNS Server	Domain Name Lookup
NTP Server	NTP Server	Set system time

Cayuga Network engineers require continuous remote access to your Decisis installation to perform investigations. We are flexible and can figure out ways to work with any constraints your environment.